

Technical Rider

Performance	“ESTADO VEGETAL” (VEGETATIVE STATE)
Country	Chile
Playwright	Manuela Infante & Marcela Salinas
Direction	Manuela Infante
Cast	Marcela Salinas
Premier	May 31 st , 2017 – NAVE, Santiago de Chile
Length	80 minutes
Contact	<p>Carmina Infante +56942505743 carminainfante@gmail.com</p> <p>Andrés García, +56 9 8776 7515 Santiago, Chile. andres@fundacionteatroamil.cl</p>
Video Link	https://vimeo.com/251036054
Web Site	http://www.fundacionteatroamil.cl/cat_internacional/estado-vegetal/
Touring Party	<p>Spanish speaking countries: 6 pax</p> <p>Other countries: 5 pax</p>

FUNDACIÓN TEATROAMIL

Personal Luggage	Play's Luggage	Total
5 (23 kg max each)	5 (23 kg max each)	10 (23 kg max each)

*Each passenger should be allowed 2 23kg luggage on the airplane, that way we can take the play's freight as passenger luggage and not pay extra luggage.

**Paid by THE ORGANISER.*

FUNDACIÓN TEATROAMIL

1. – STAGE MEASUREMENTS

	Minimum	Preferred
Wide	12 m	14 m
High	5,5 m	7,5 m
Depth	12 m	15 m

- **Type of Stage**

Black box.

At least 3 legs on each side of stage.

A black border must cover the upper side of the Rosco Screen.

Two black legs must cover each side of the Rosco Screen

THE ORGANISER must send to THE COMPANY pictures and plot of the venue in DWG or WYG and PDF. (grill plan, seating plan and stage plan). Depending on the venue's lay-out, some seats may have to be cancelled to allow good sight-lines. Please contact technical crew for more information.

- **Stage Floor**

Needs to be covered with a white floor of 9,5 mts wide and 8,50 depth. The measure has to be confirmed depending on the venue.

No screws or nails are put in the floor.

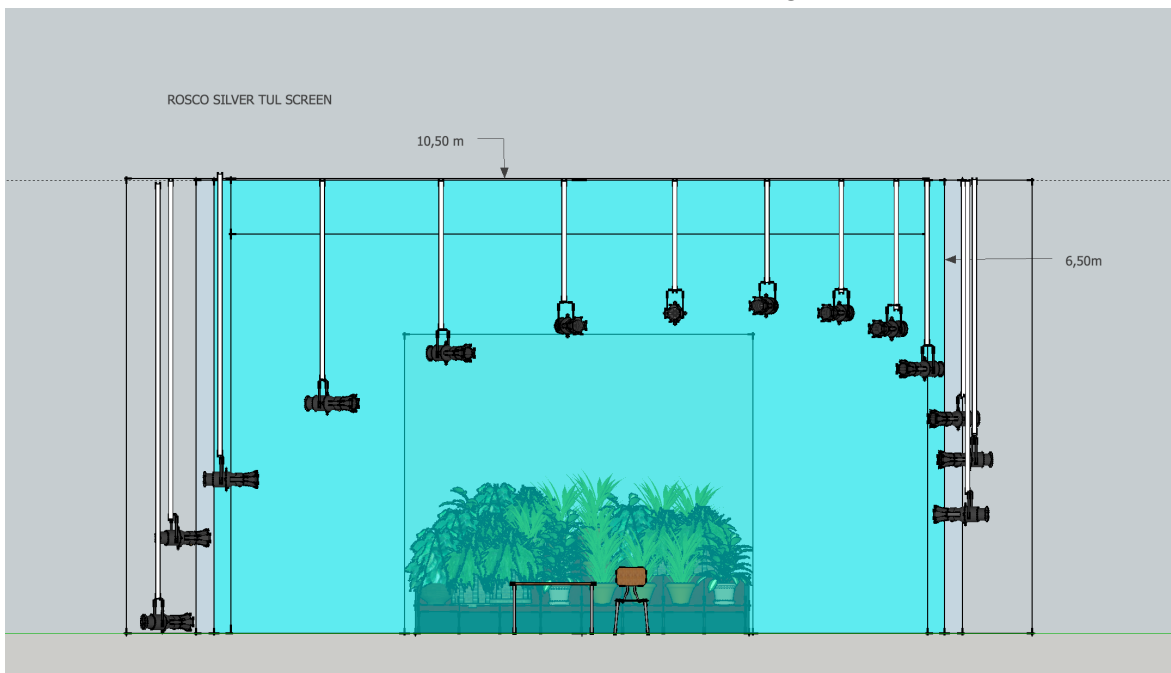
In case the stage has a higher gradient than 0º THE ORGANISER must inform THE COMPANY

FUNDACIÓN TEATROAMIL

2.- STAGE DESIGN

Scenography provide by THE COMPANY

- Rosco Silver Tulle Screen (10,5mts wide X 8mts high)

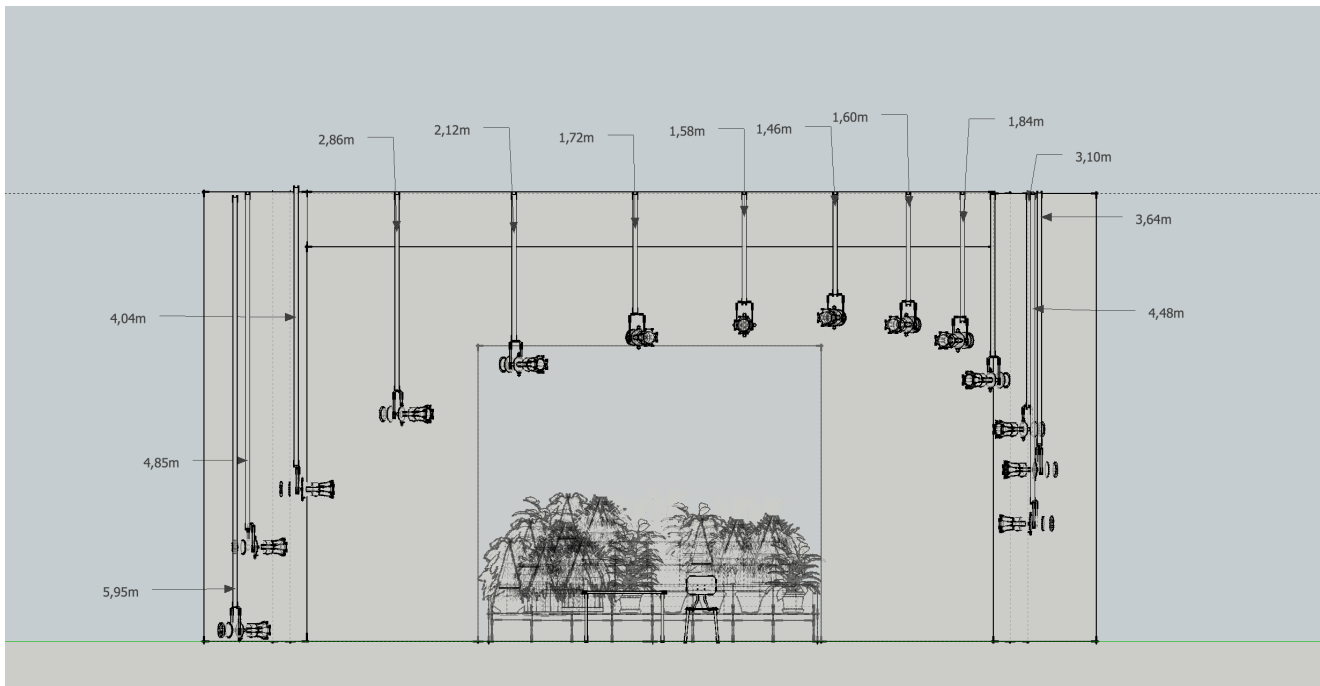


FUNDACIÓN TEATROAMIL

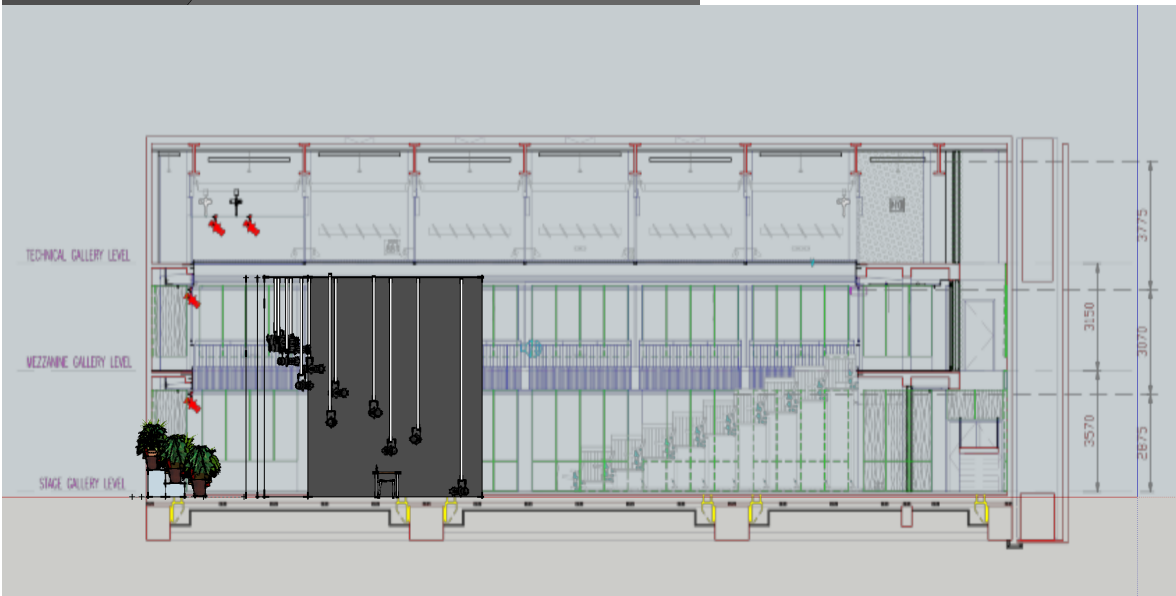
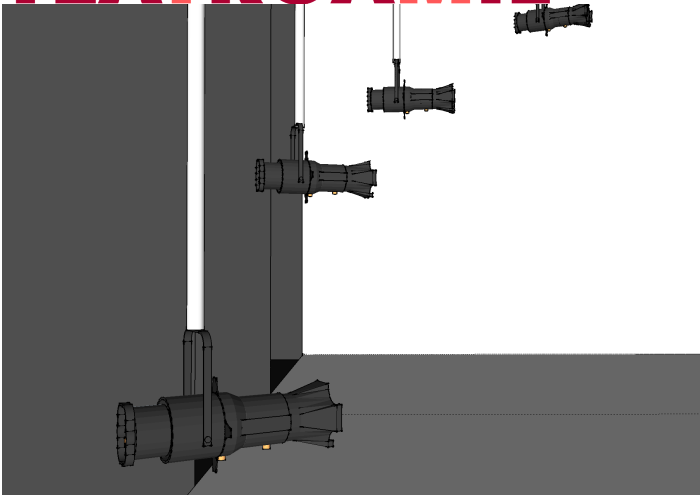
Scenography provide by THE ORGANISER

A.- Vertical Pipes System.

- 14 source four profiles are going to be hung.
- The pipes should be no more than 2" diameter.
- Every pipe is painted white.
- Every profile is fixed to the vertical pipe with a clamp screw.
- The electric cable should go through the pipe.
- Each length must be confirmed according to the venues measures.

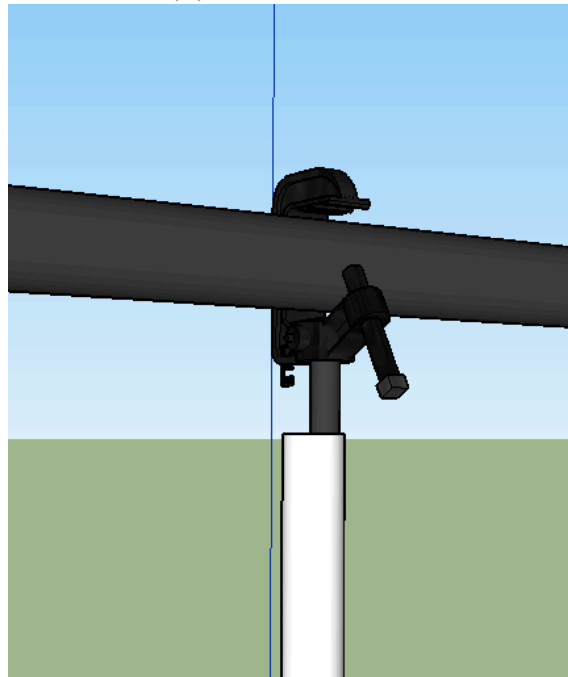
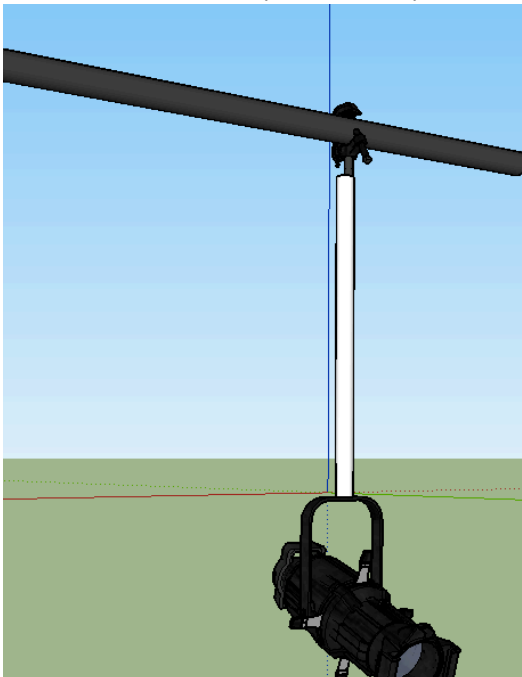


FUNDACIÓN TEATROAMIL



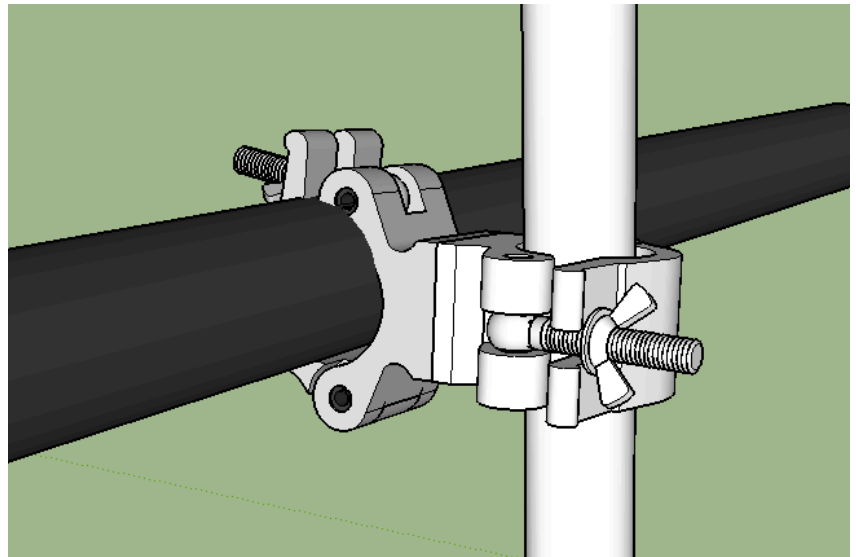
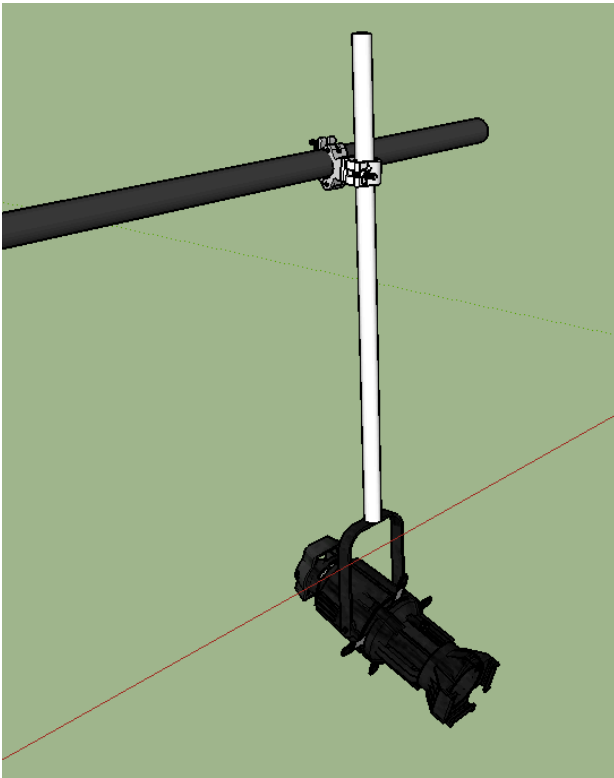
>Options to hang the Vertical pipe to the grid or venue's pipe system.

(A) Same Profile Clamp used on top to be fixed on the horizontal pipe

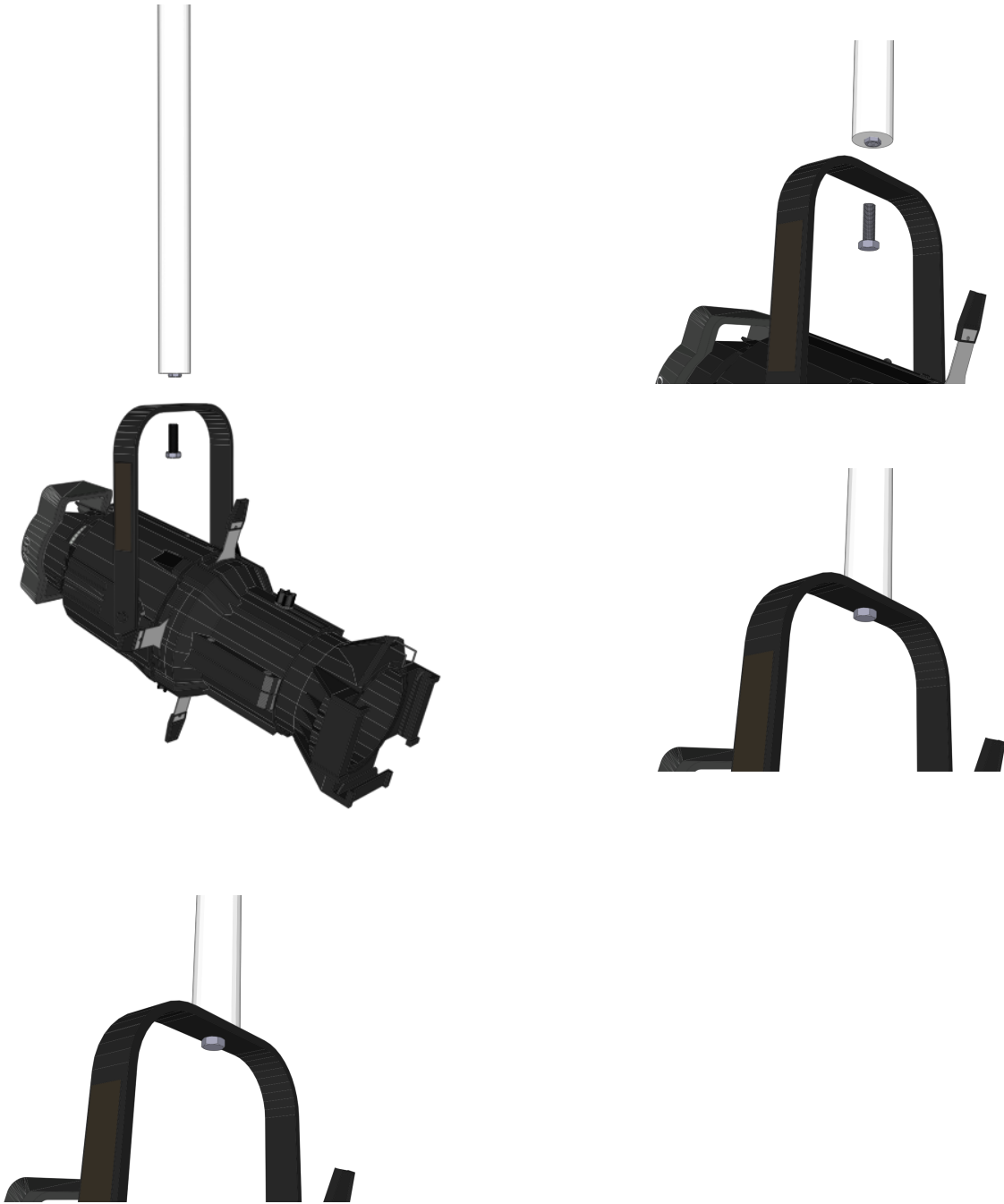


FUNDACIÓN TEATROAMIL

(B) Double Clamp or swivel coupler to fix easily the height of vertical pipes in different venues. Recommended set.



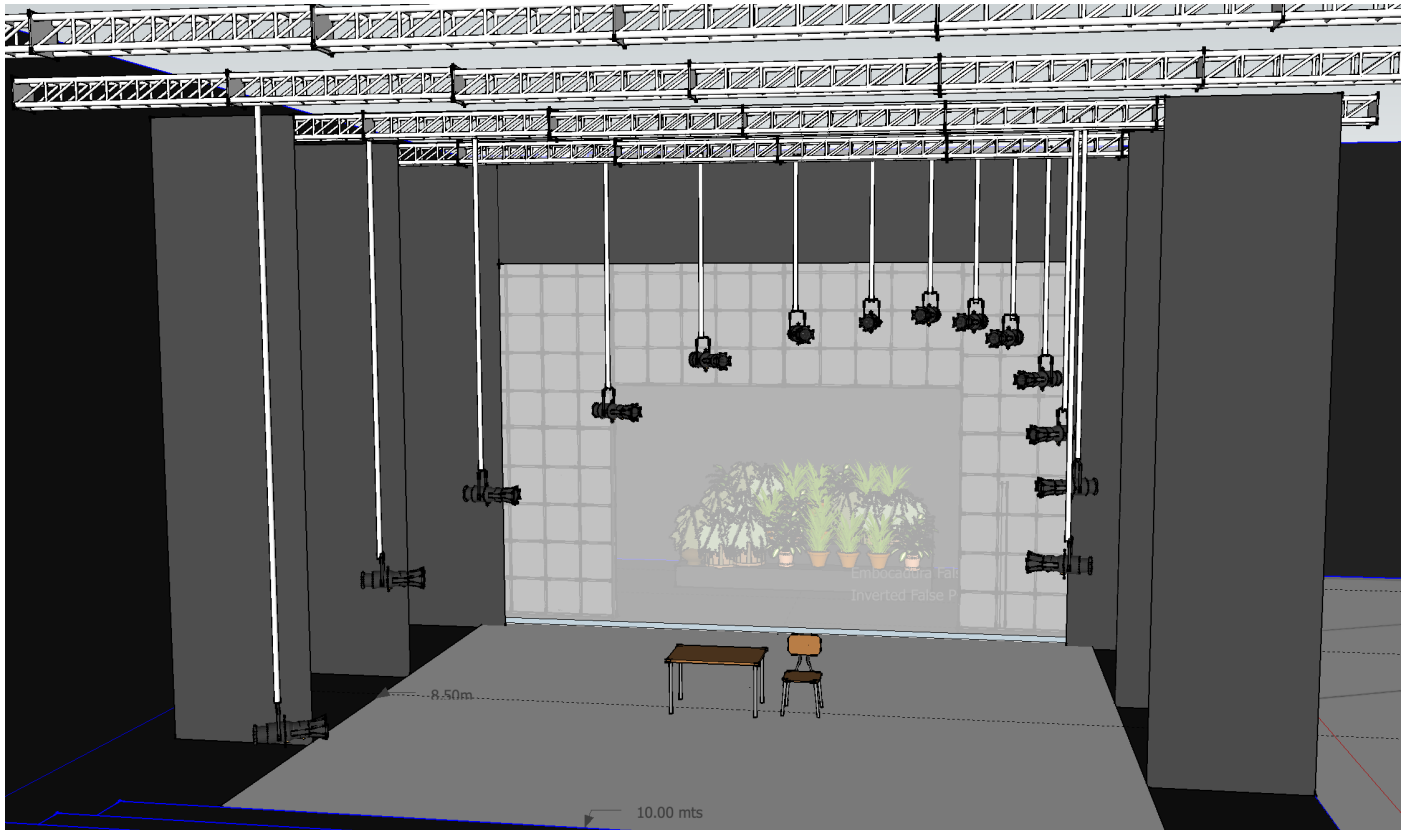
FUNDACIÓN TEATROAMIL



FUNDACIÓN TEATROAMIL

B.- Masking

- Black legs and upper vertical border as shown in the image.

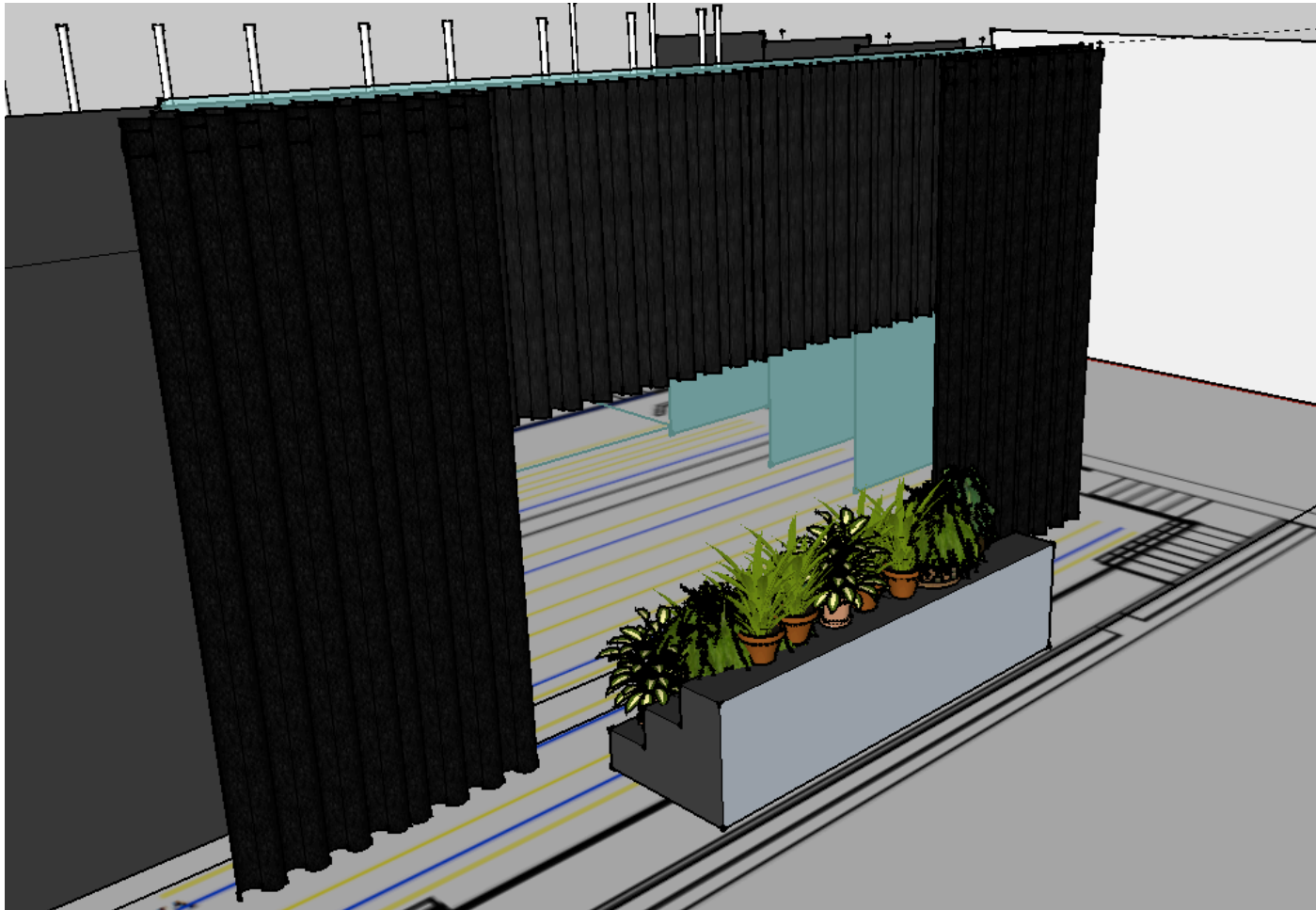


FUNDACIÓN TEATROAMIL

C.- Inverted False Proscenium Arch

- Black pleated curtains

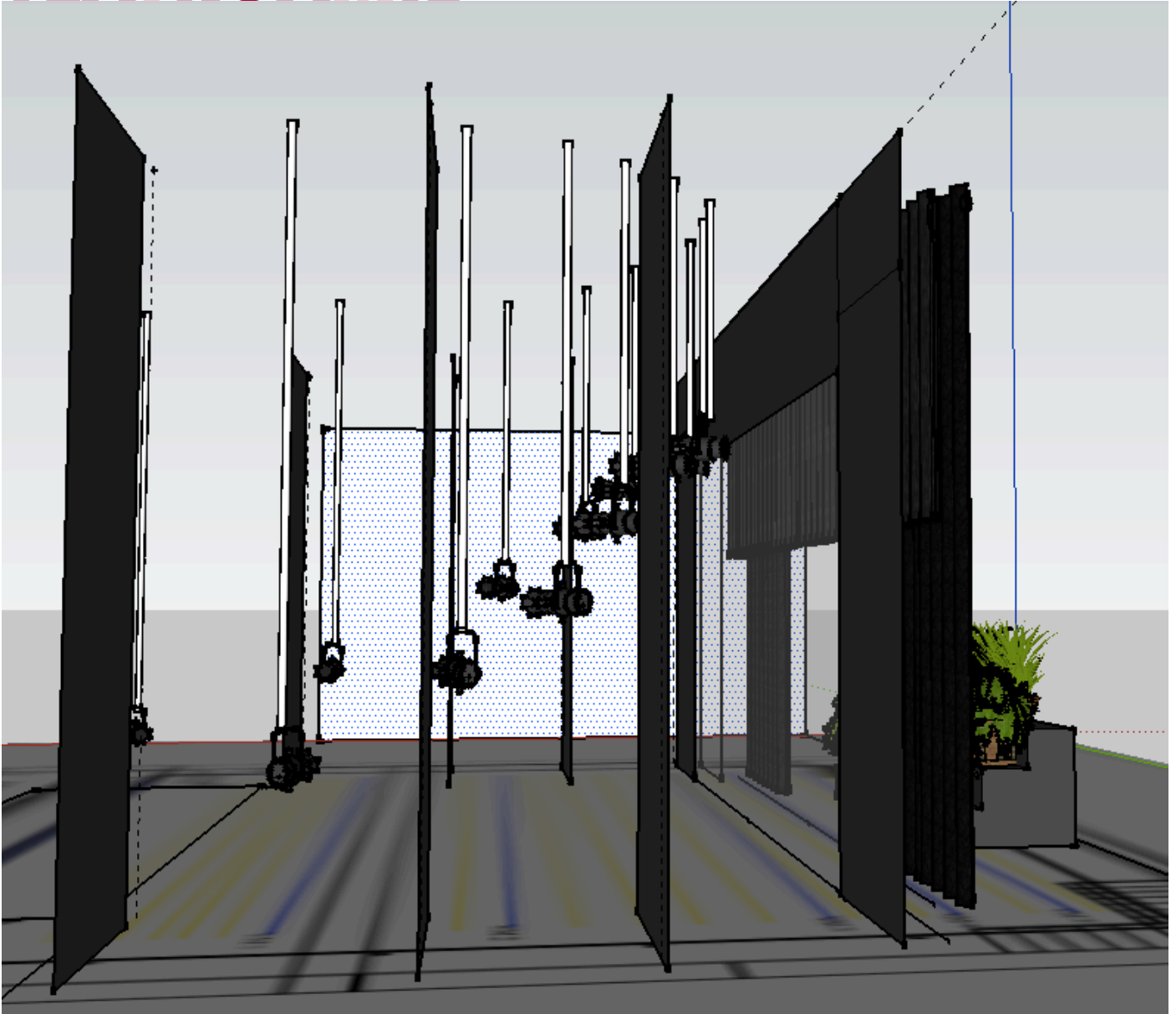
This measure depends of each venue



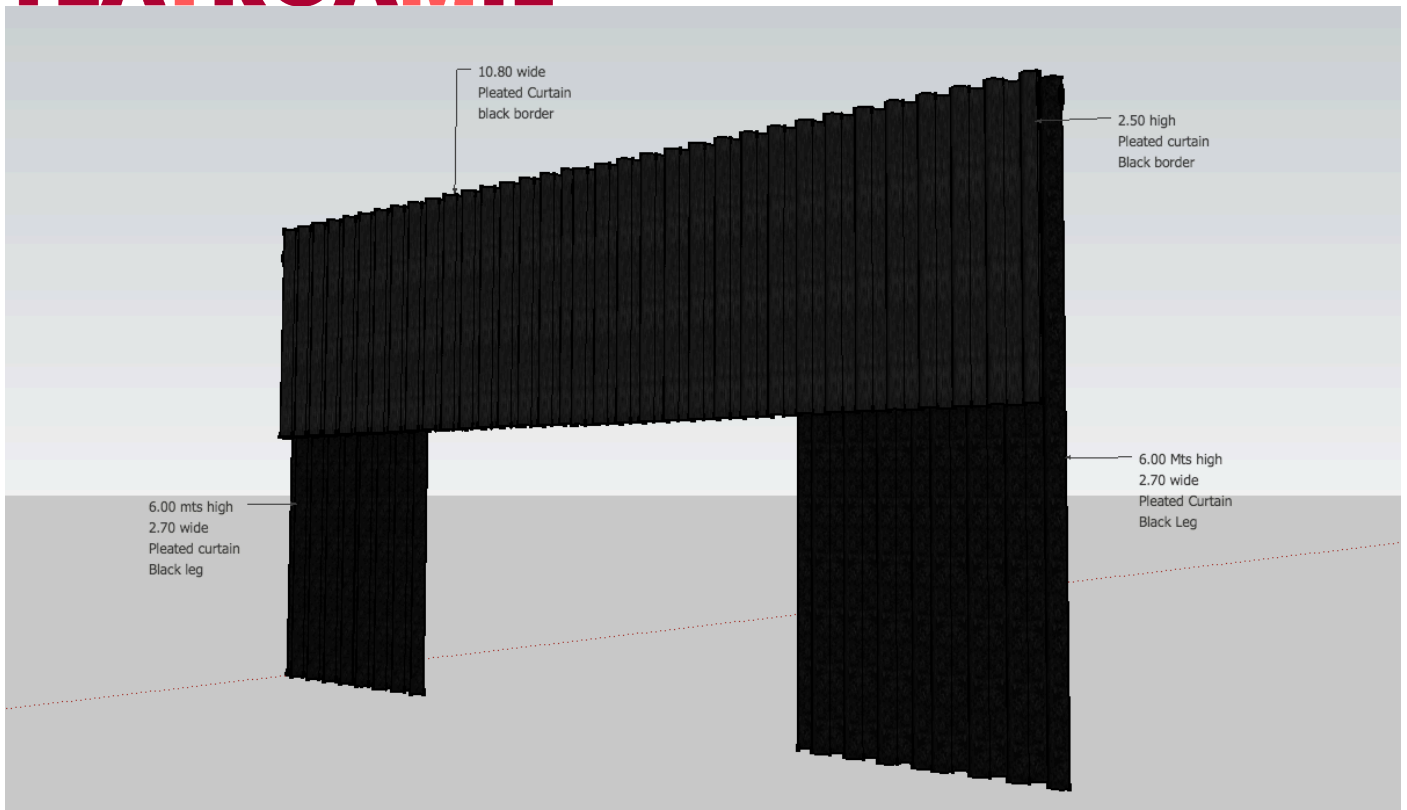
FUNDACIÓN TEATROAMIL



FUNDACIÓN TEATROAMIL



FUNDACIÓN TEATROAMIL



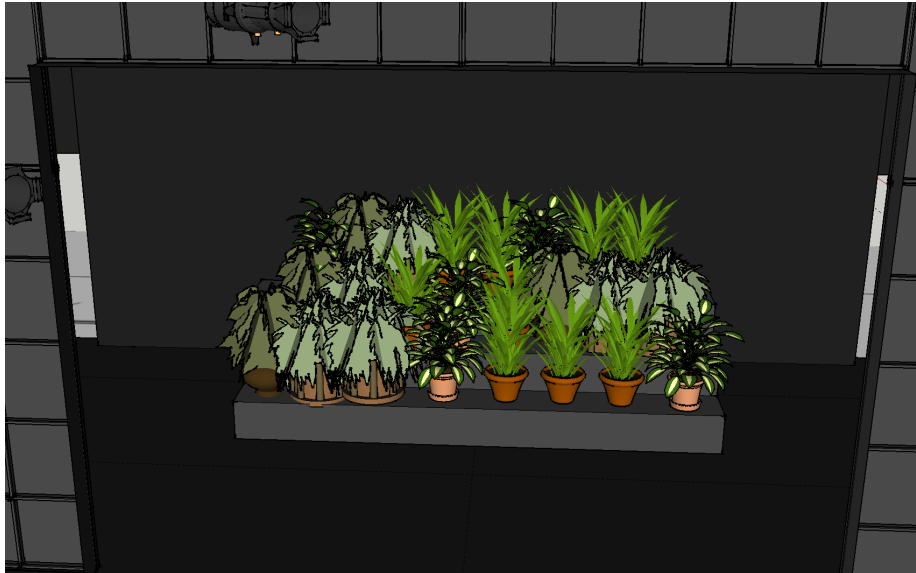
FUNDACIÓN TEATROAMIL

D.- Black platform with false plant audience

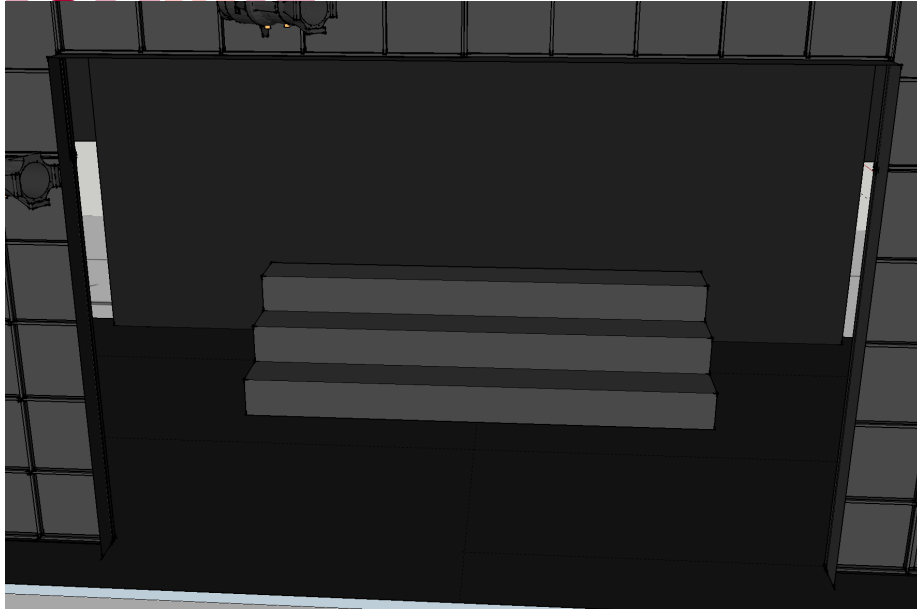
- 4,80 mts wide X 1,50 mts depth.
- each row is 50 cms depth
- 3 rows covered whit potted plants. all planters must be the same color: Brown.
 - 1 row: 40 cms from the ground.
 - 2 row: At 80 cms from the ground.
 - 3 row: At 120 cm from the ground.

*The measure of the platform must be confirmed according to the depth of the stage.

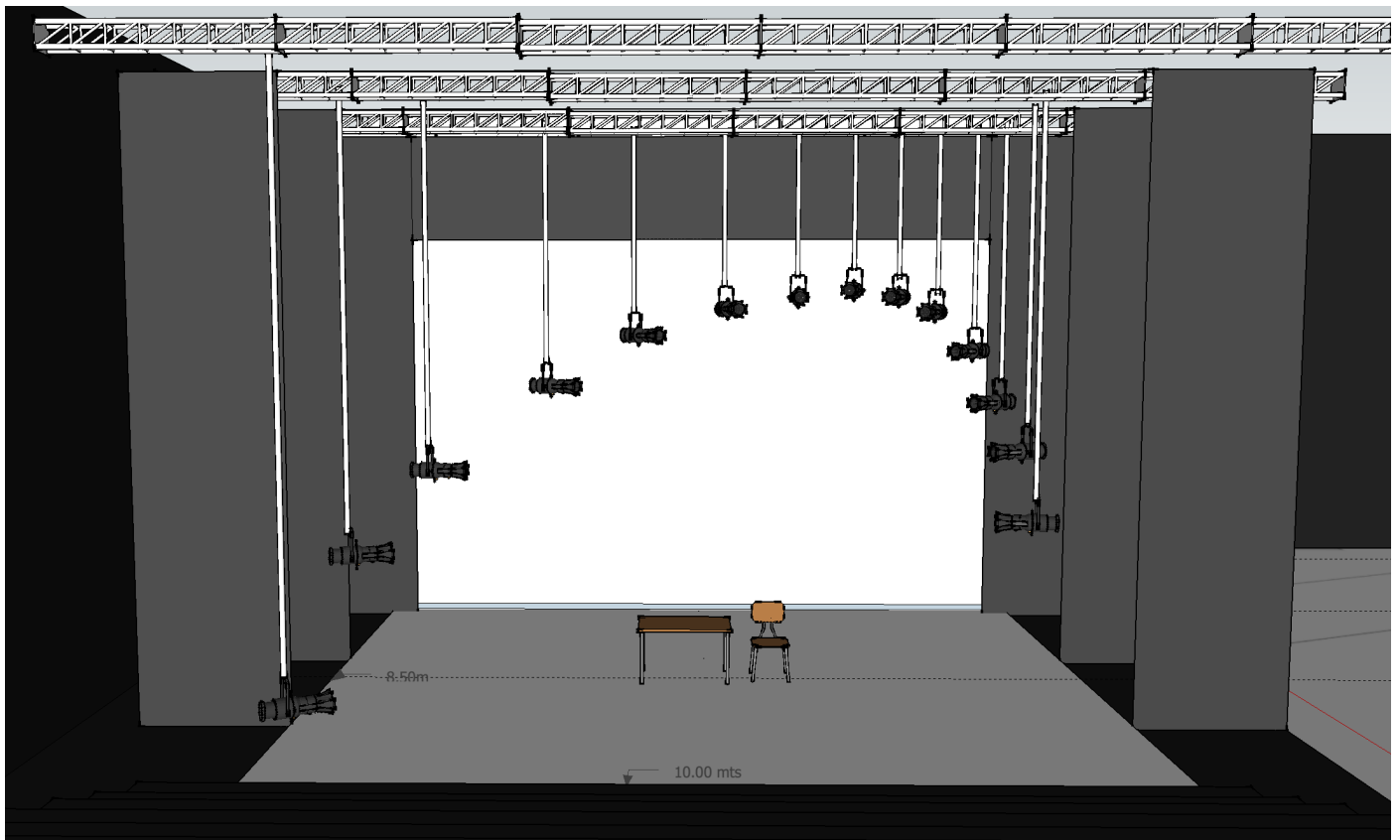
*The plants need to be shaken from behind so the platform doesn't need to be firm. Please see video.



FUNDACIÓN TEATROAMIL



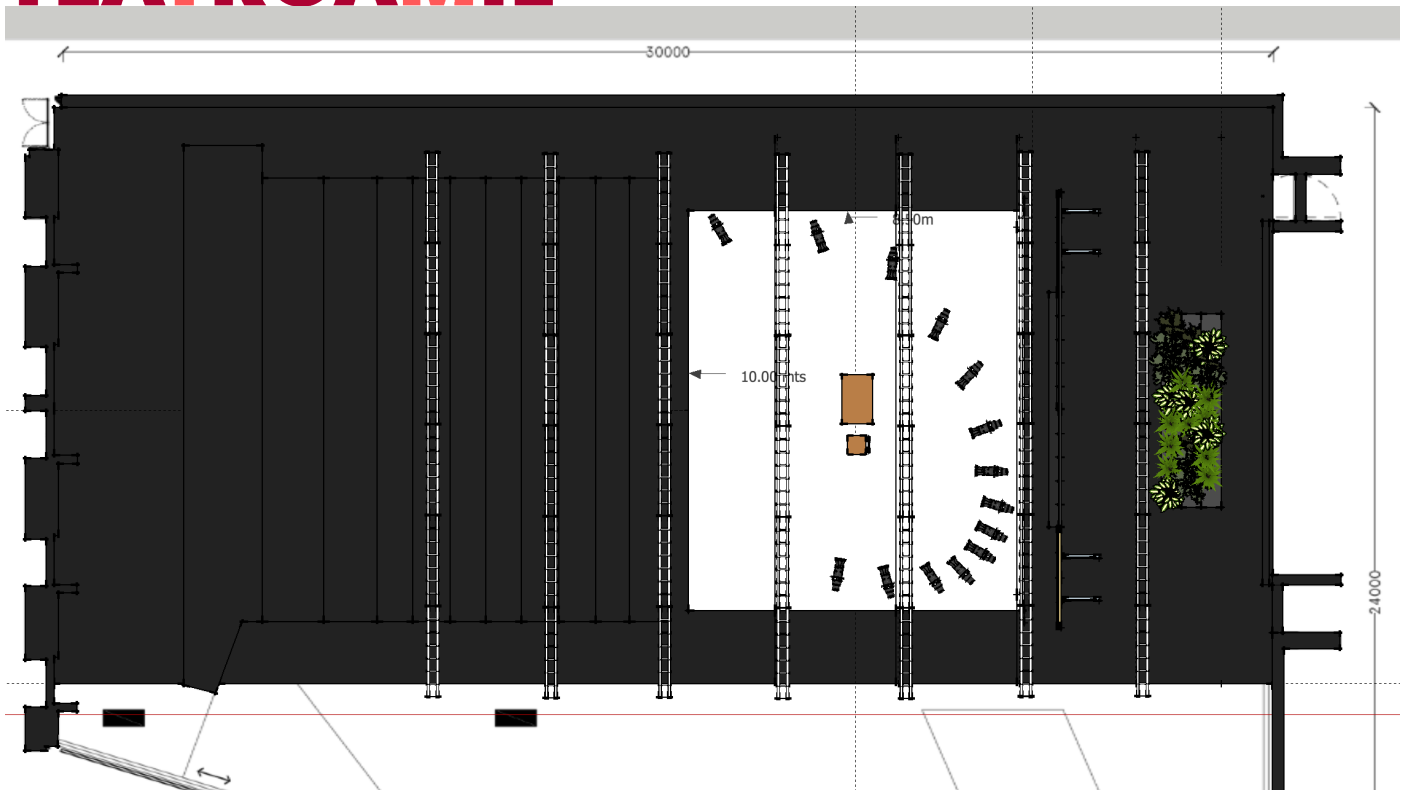
STAGE DESIGN REFERENCE



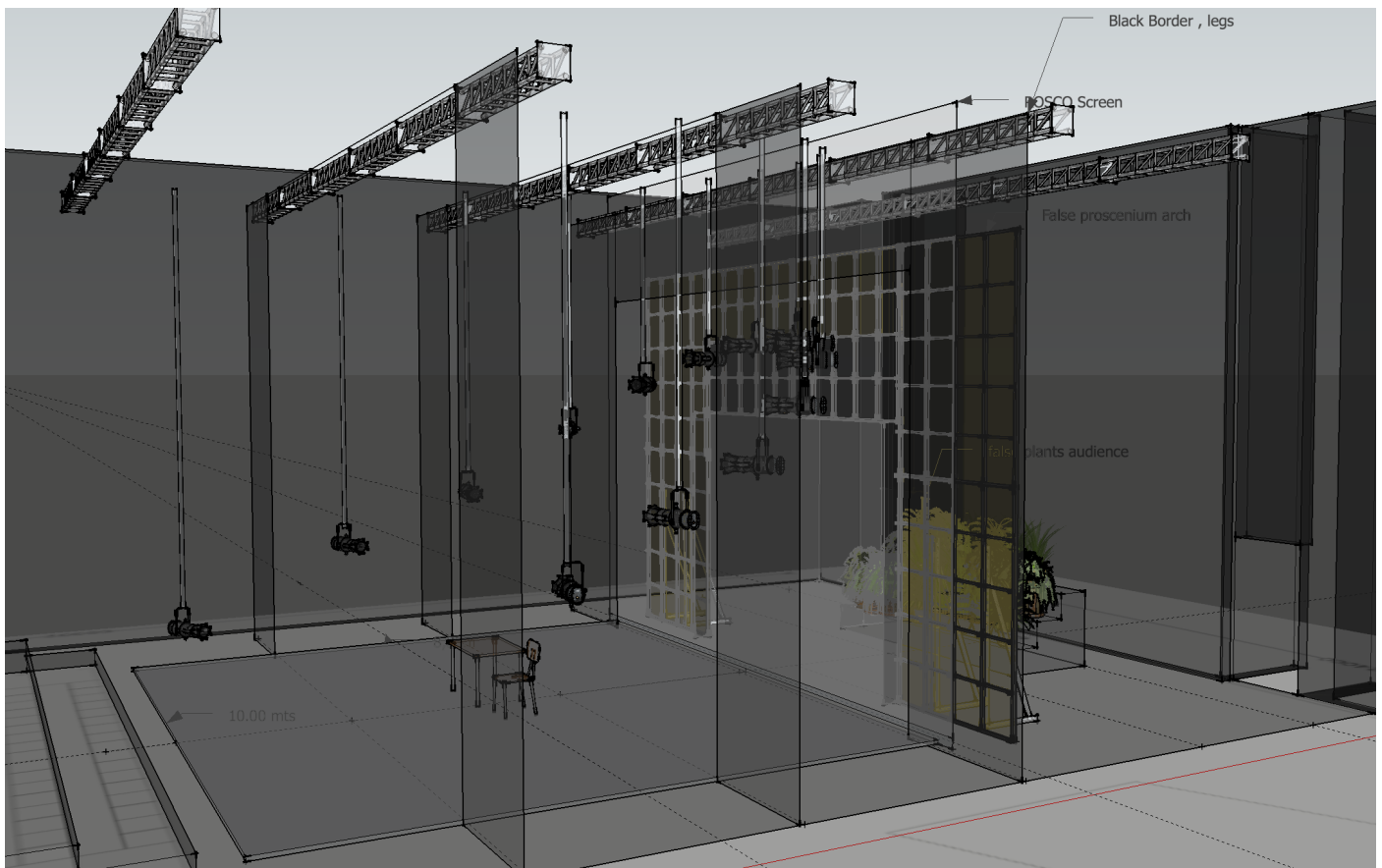
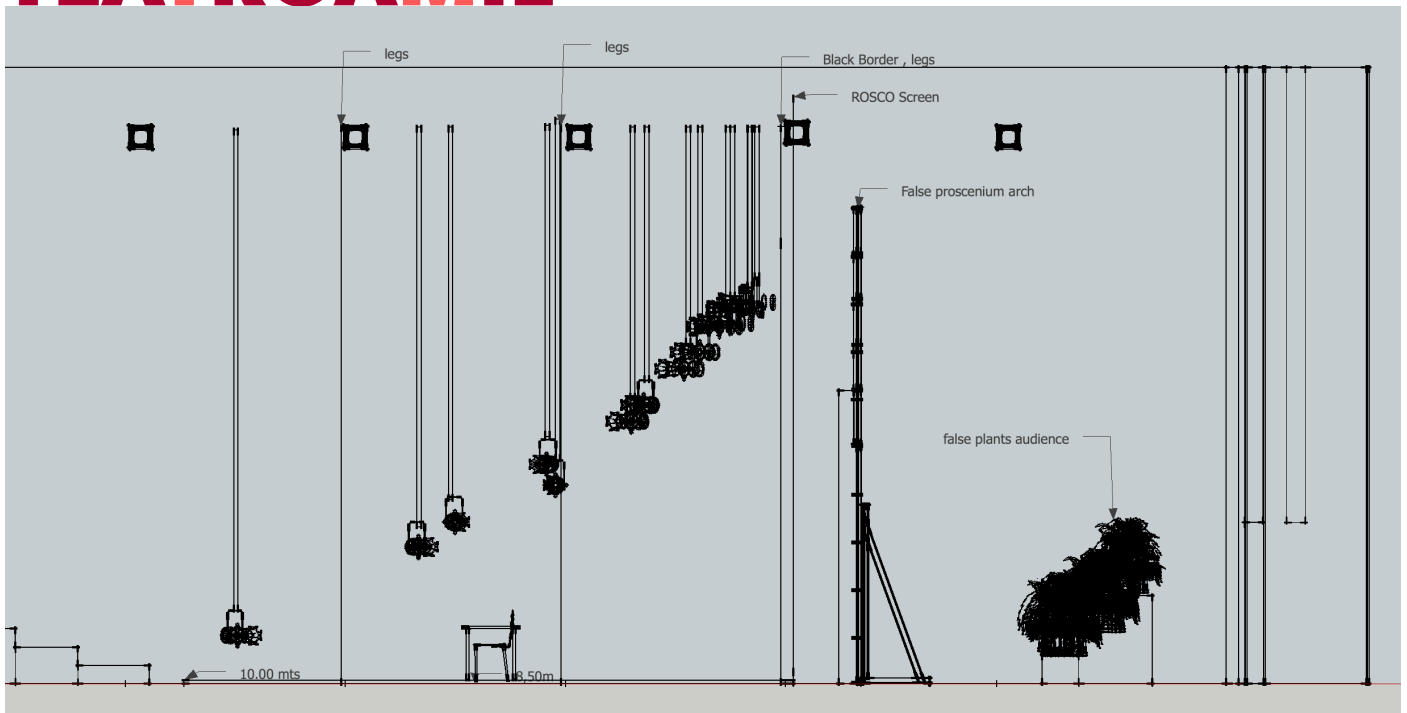
FUNDACIÓN TEATROAMIL



FUNDACIÓN TEATROAMIL



FUNDACIÓN TEATROAMIL



Isometric view.

FUNDACIÓN TEATROAMIL

3.- PROPS

Props provided by THE COMPANY

A.- Package of 40 cms X 40 cms X 1.80 mts high.

- Contains:
- Plastic Plant (1)



FUNDACIÓN TEATROAMIL

- 2 mic stand sculptures



FUNDACIÓN TEATROAMIL

B.- Package with flowerpots.

- Plastic Flowerpots (2)



- Small piece of Grass. (1)



- Ball. (1)



- White Envelope. (1)
- Adhesives and other materials.

FUNDACIÓN TEATROAMIL

- Plastic plant with tricks. (1)



- Plastic flowerpot bottomless (1)



FUNDACIÓN TEATROAMIL



C.- Package with Plant trick



FUNDACIÓN TEATROAMIL

Props provided by THE ORGANISER

A.- Wooden cover Table with 1 Small hole (1) (Same Kind as chairs)

- Table measures 1.20 mts X 0.75 mts.
- 1 small hole of 20,5 cms diameter on left side
- The table must have hidden wheels fixed inside each leg so it can be moved easily during blackouts.
- Must support one actor seated and props over the table
- The interior must be painted in Black
- The hole needs a small net of elastic bands to hold the green ball (see on video)

FUNDACIÓN TEATROAMIL

MESA 1

Orificio Pequeño de 20,5 cms de Diametro

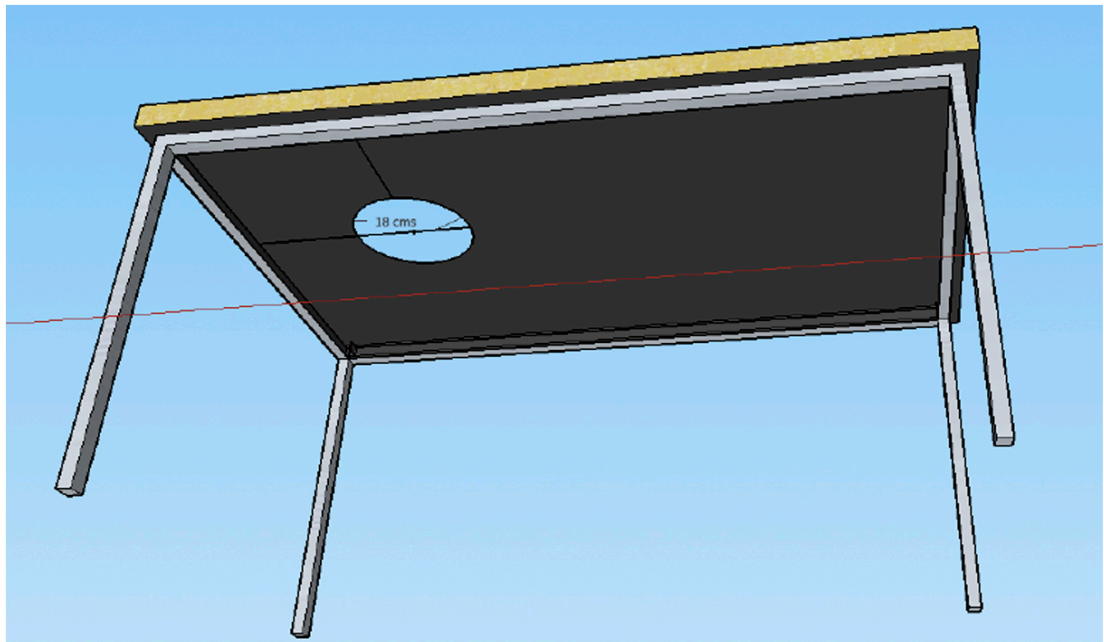
Cubierta de 1,20 x 0,75 cms.

Altura 75 cms

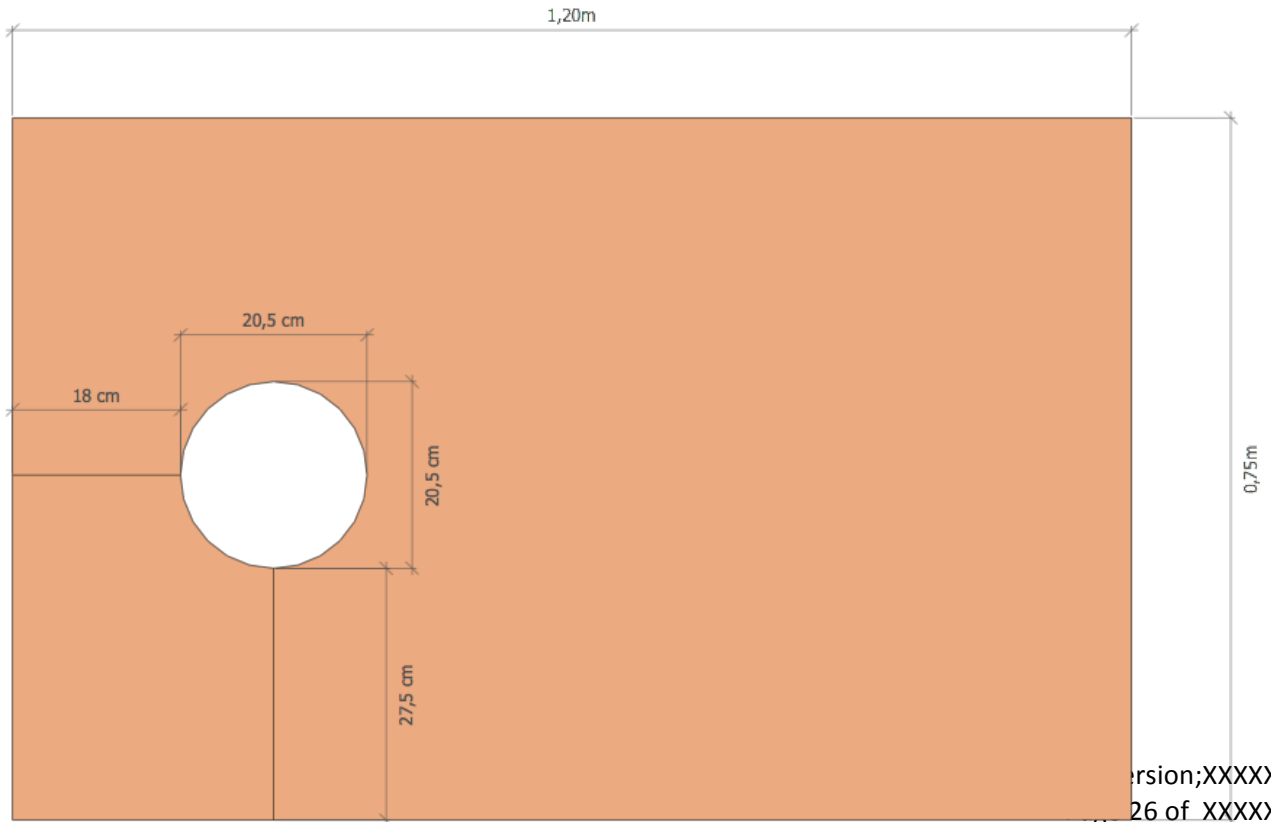
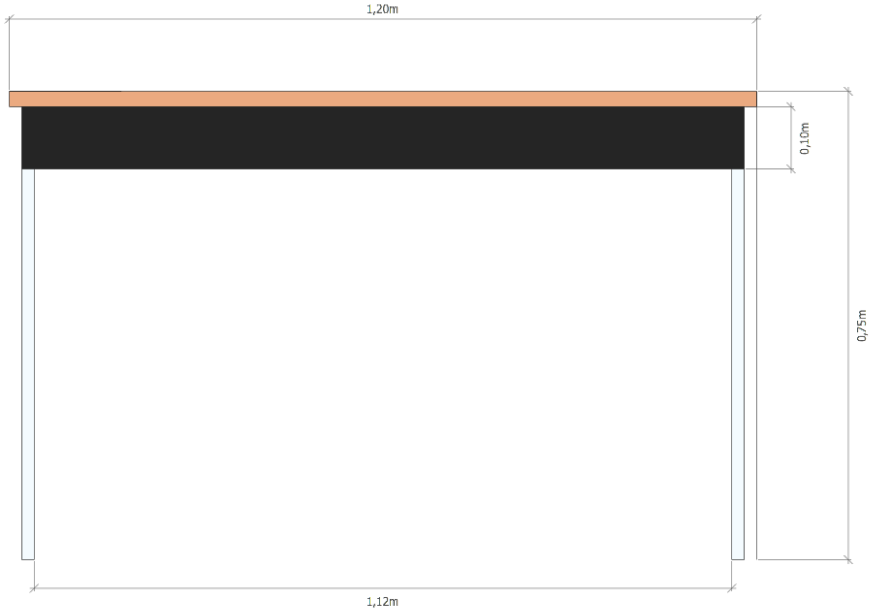
Ruedas pequeñas con freno en las 4 patas

Cubierta de madera

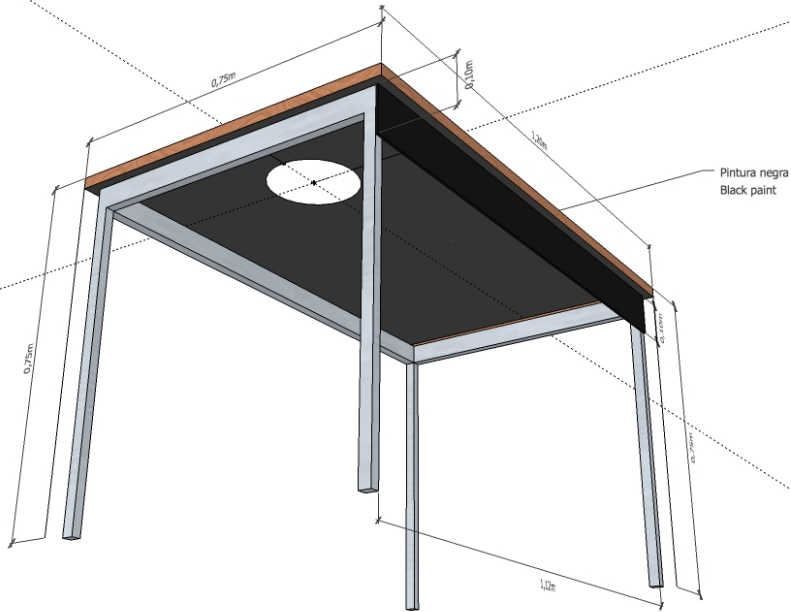
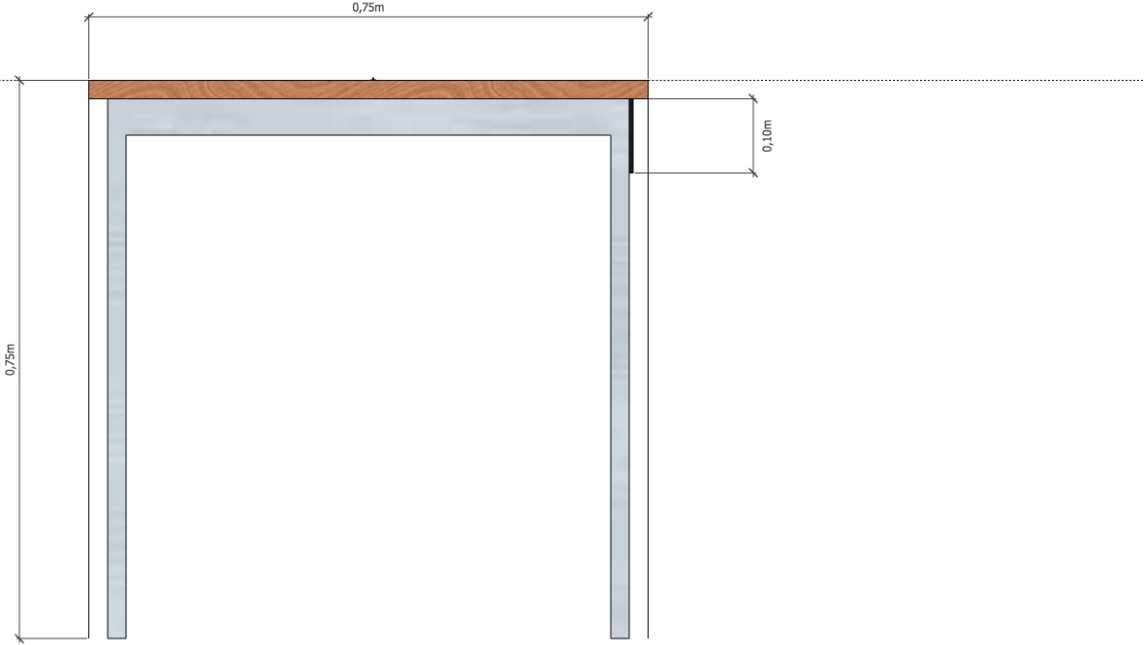
Interior pintado Negro .



FUNDACIÓN TEATROAMIL

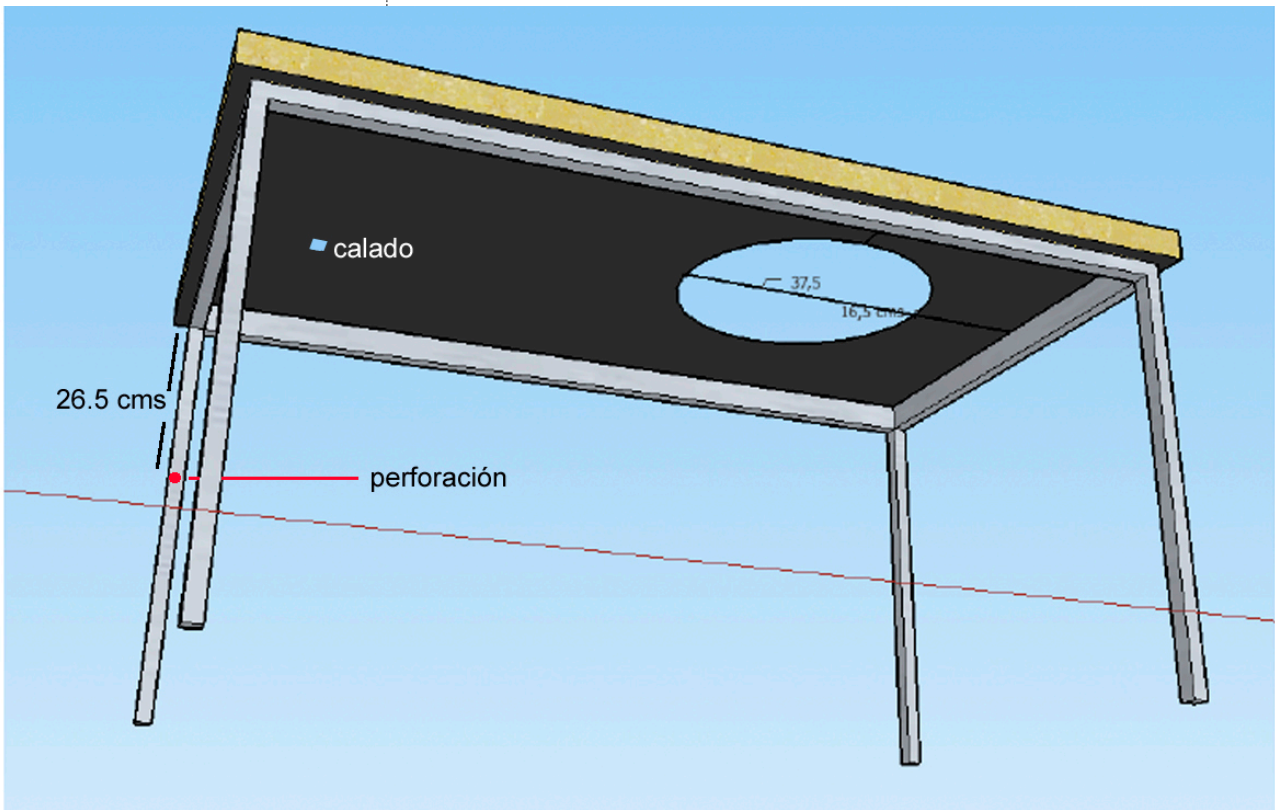
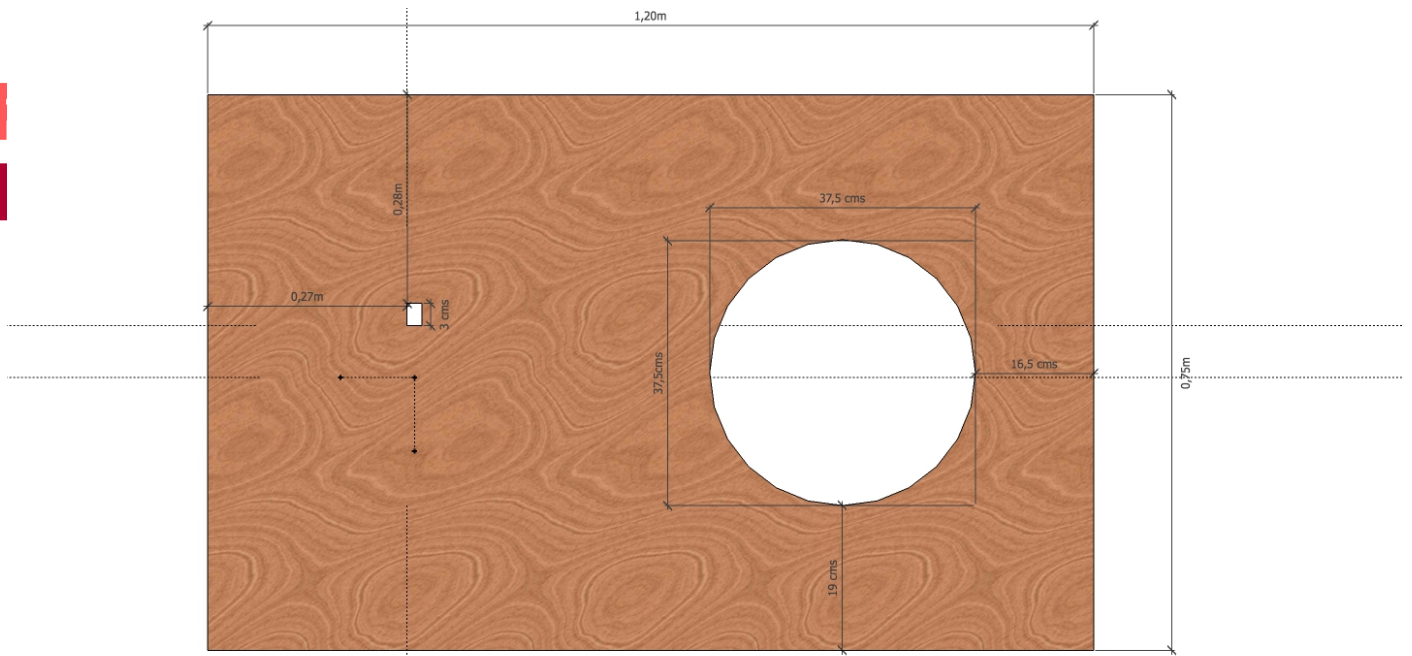


FUNDACIÓN TEATROAMIL



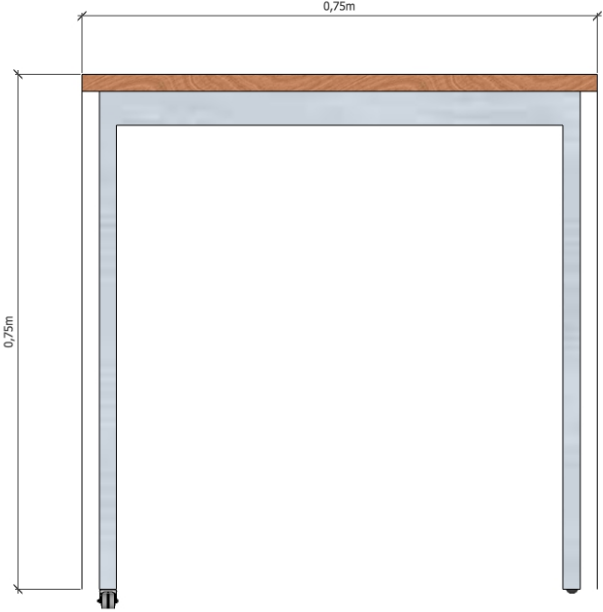
B.-Wooden cover Table with 1 big hole (1). (Same Kind as chairs)

- Table measures 1.20 mts X 0.75 mts.
- 1 big hole without top of 70 cms diameter on right side
- The table must have hidden wheels fixed inside each leg so it can be moved easily during blackouts.
- Legs must support one actor seated over the table.

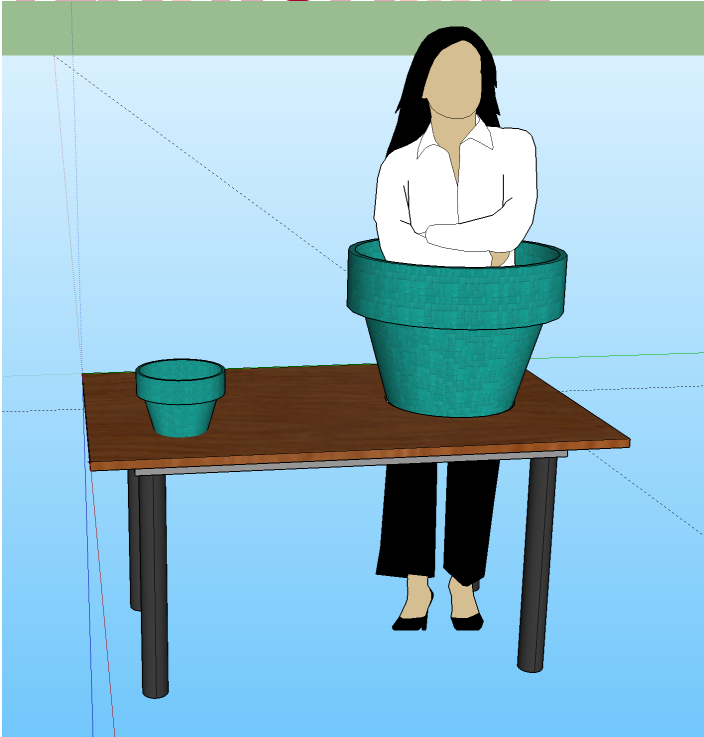


- The interior must be painted in Black

FUNDACIÓN TEATROAMIL



FUNDACIÓN TEATROAMIL



FUNDACIÓN TEATROAMIL

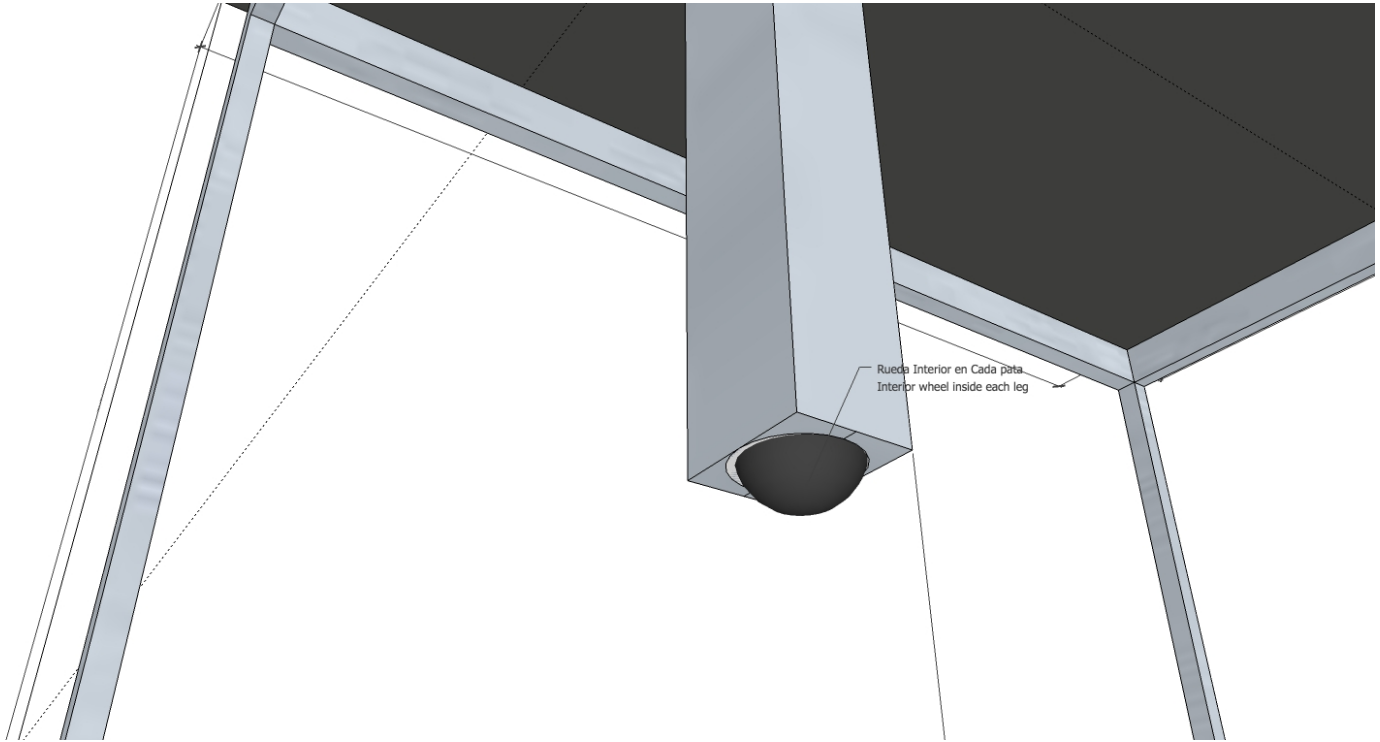


*Both tables should look the same.

FUNDACIÓN TEATROAMIL

Table Wheels. Two options:

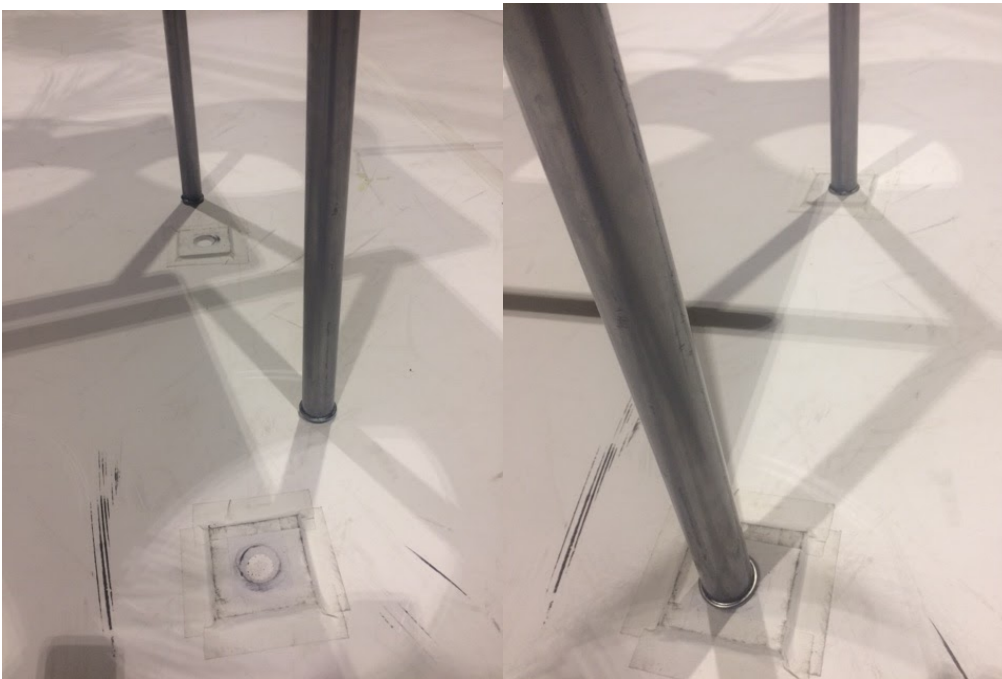
A: wheels inside each leg



FUNDACIÓN TEATROAMIL

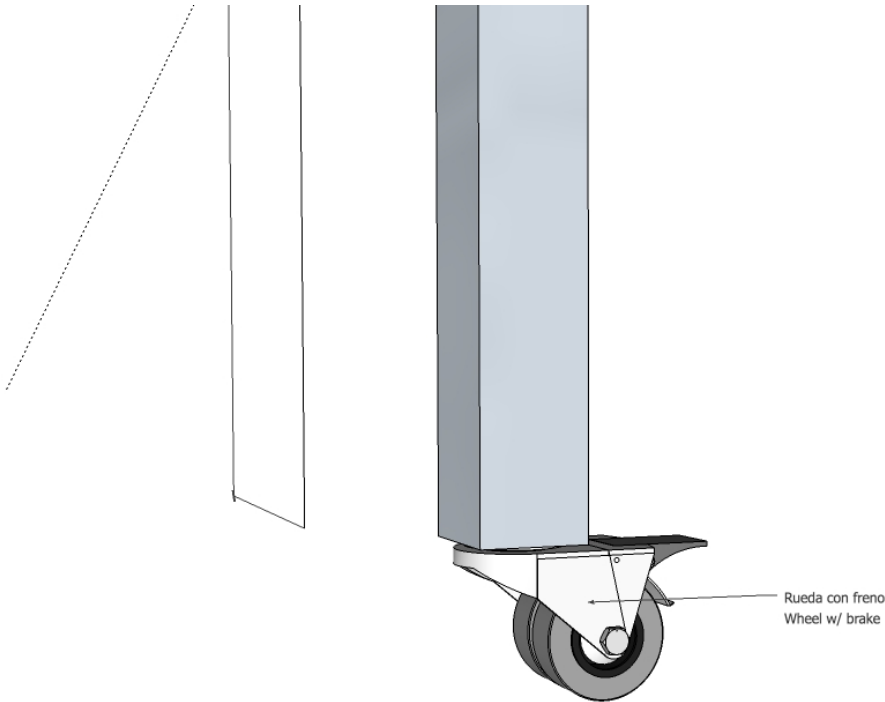


*Each leg needs a base so it doesn't move. There should be 4 bases on stage and 4 off stage.



FUNDACIÓN TEATROAMIL

B.
Small wheels with brake



FUNDACIÓN TEATROAMIL

C.- Chairs (2)

- The cover must match with the table.



D.- Other table to use off stage

- 1.20 mts X 0.75 mts.



FUNDACIÓN TEATROAMIL

E.- Plastic Plants (40)

- Different shapes and measures from 1.00 to 1.30 height. Brown Flowerpots



FUNDACIÓN TEATROAMIL

F.- Plants with 3 different measures and shape(3)



(1)60 cms high big and rounded leaves (1)



(2)30 cms high tiny leaves (1)

(3)90 cms high tall skinny leaves (1)

FUNDACIÓN TEATROAMIL

G.- Dry small branches (10) and dry brown leaves (10).



***They need to be really dry in order to sound crunchy. Please see video.

FUNDACIÓN TEATROAMIL

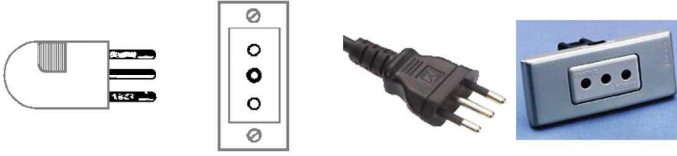
H.- Microphone Stands (6)

- They should all be the same
- 2 wireless microphones (used as props, so no need for them to work or have cables)

4.- ENERGY

All electrical equipment provided by COMPANY operates with 220V 50Hz. In case that the venue has other type of power, THE ORGANIZER must provide the following transformers and adapters to the company.

- 2 110/220V converter 500W
- 8 adapters for our material (view drawing of our plug CEI 23-16)



5. – SOUND

Equipment provided by THE ORGANISER *

A.-PA

- A system suitable for the venue and for the amount of people that is expected.

B.- BOARDS

A board with 6 channels minimum with reverb, and delay digital fx.

C.- MONITORING

- Stage monitor for the actress. (1)

D.- MICROPHONES

- Voice mics (3) with their cables. SM58 or similar.
- Wireless Headset Mic (1) with their cables, transmission and receiver. SHURE QLXD headset SHURE Beta 53 or similar.

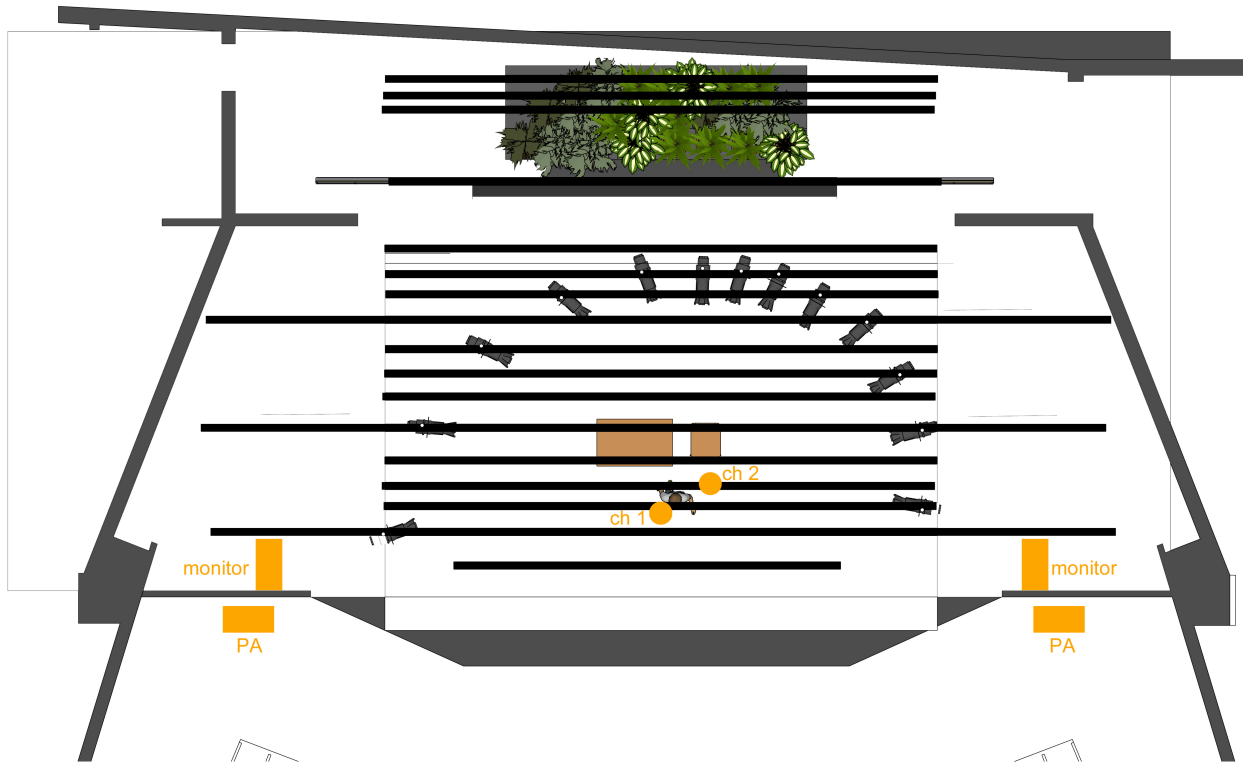
E.- OTHERS

- RCA – Mini Plug cable (1). Used for connecting a pc to the board.
- Mic stands (6). KM – 25400 is preferred. Are used as props.
- Intercom system (3 radios)

THE ORGANISER must send, at least 14 days before load-in, to THE COMPANY a complete proposal of all sound material that will be provide for the show.

**Depending of the specific features of each venue, the technical team might ask to reinforce the number microphones if is needed.*

Stage plot



Channel List

CH	Source	ENLACE		Position
#1	Voice Actress 1	Sennheisser G3		Actress
#2	Voice Actress 2	Mic - Shure SM 58 Vocal looper pedal	Mic Stand	Stage
#3	Interfaz L	Computer/Midi		FOH
#4	Interfaz R	Computer/Midi		FOH
#5	Reverb FX			FOH
#6	Delay FX			FOH

Sound equipment provided by THE COMPANY

A.-Vocal looper pedal (1)

B.- Computer (1)

6. – SUBTITLES

Equipment provided by THE ORGANISER

A.- 1 video projector 4000 Lumen

B.-1 shutter (dowser) for the projector lens. Very important for a complete BLACKOUT.

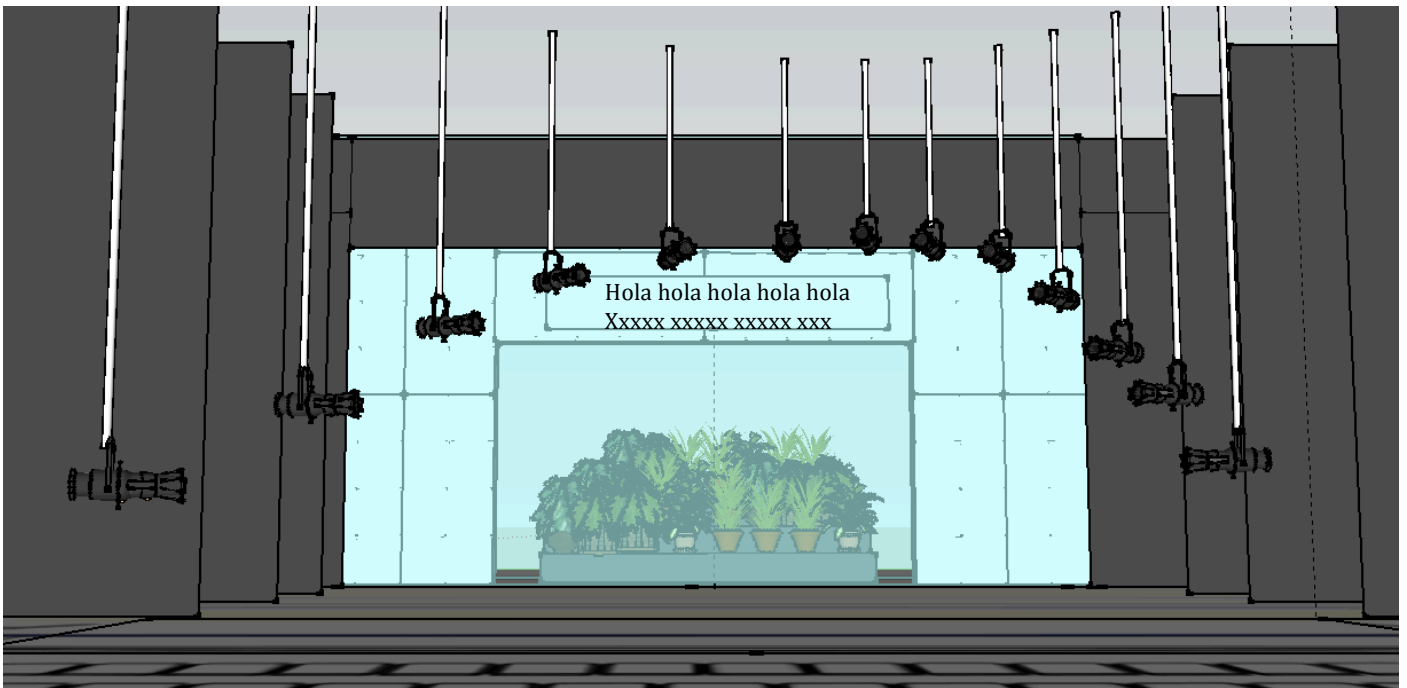
C.-1 white 450cm wide x 70cms high screen.

Must be hung behind the Rosco screen in the same pipe.

Projector must be located in front.

The location of the subtitle screen and projector will be given on the plan.

All installation system, cabling and support.



Equipment provided by THE COMPANY

- Computer with subtitles (Glyptheo)
- Subtitle operator

7. – LIGHTS

Lighting equipment provided by THE ORGANISER

After receiving venue’s plot with lightning pipes position and lightning inventory, THE COMPANY will send the final detail of the instruments to be used.

THE ORGANISER will provide all the filters according to the lighting plot.

10	Parnel
12	PAR 64
13	Source Four 19º
9	Source Four 26º
5	Source Four 36º
8	Source Four 25/50º
8	ETC LED CYC (4 colors mix ambar-red-Cyan-White)
1	Hazer Machine
1	Smoke Machine
1	Fan
2	Rosco Gobo Holder
4	Iris

THE ORGANISER must send to THE COMPANY technical rider and plots of the venue. THE COMPANY will send a hanging plan to THE ORGANISER, a detail of the instruments used in this attempt to optimize the entire inventory of the venue. Any material that is not on data sheet should lease and paid by THE ORGANISER, unless the contract provides otherwise

**THE COMPANY is not responsible for leased equipment.
All equipment must be in good physical and operational conditions, should work 100% and have all cables.
The components of the equipment must be original and not replaced by models and / or different equipment brands supported.
The full team rider that the employer intends to be used by THE COMPANY shall be submitted and approved by the technical team of the company 15 days before the .
Technical material must be properly protected from the rain and sun, if mounted outdoors.
At all times during the sound check and during the show must be present a responsible by the leased equipment.*

9. – SCHEDULE

Day 1 - Arrival
Day 2 – Set Up
Day 3 – Set Up
Day 4 – Rehearsal and performance
Day 5 - Performance

A technical plan will be designed depending on the venue.

10.-LOCAL CREW

A.- Light and sound technician for back up

*light and sound is operated by members of the company.

B.- 2 stagehands

* for set up and strike

C.- 1 person behind the scene.

* to dress the actress during blackout, and to shake the plant audience during the show.

The technical crew for the shows must be the same for the rehearsals.

Catering must be available during the set up, rehearsal and shows. (Bottled water, fruit station, nuts, coffee, tee...)

If the technical crew doesn't speak English or Spanish, 1 interpreter will be needed for setup, rehearsals and performances

Both THE ORGANISER and THE COMPANY must approve the technical planning. All changes must be communicated and approved by THE COMPANY.

11. – LAUNDRY SERVICE.

Laundry service might be needed. Please contact with our tour manager for more information.

Washing, drying and ironing is needed.

12. – TOURING CREW

- 1.- Manuela Infante (Director and Sound Operator)
- 2.- Marcela Salina (Actress)
- 3.- Rocío Hernandez or Pablo Mois (Scenic, Lighting and Costume Designer and Light Operator)
- 4.- Stagehand
- 5.- Carmina Infante (Producer and Subtitle Operator)
- 6.- Tour Manager

***If subtitles are needed the touring crew is of 6 people. If not it is of 5 people

13.- ROOMING LIST

6 singles

14.- CONTACT

FITAM

Evelyn Campbell - Production Director of Fundación Teatro a Mil

+56 9 9519 3965 Santiago, Chile.

evelyn@fundacionteatroamil.cl

COMPANY

Carmina Infante - Producer

+56 9 4250 5743 Santiago, Chile.

carminainfante@gmail.com